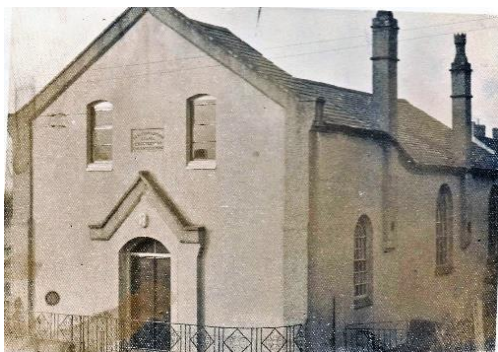


HERITAGE TRAIL GRIFFYDAM WESLEYAN REFORM CHURCH

The Chapel was opened on 27th April 1858 by Rev Jabez Burns DD of London, and services were conducted on 2nd May 1858 by Mr J W Acrill of Mansfield. Sabbath School was resumed on 16th May, when forty children attended.

The following are notes copied from the minute book:

“The Wesleyan Methodist Reformers at Griffydham being summarily turned out of the old house in which they had conducted their Services for several years, by the interference of the newly appointed Steward of the Nobleman whose property it is, had no place in which to conduct their Sabbath School and hold their Religious Services. At this period, namely Nov10 1857, Application was made to Miss Mary Farmer of Worthington for a peice (sic) of ground on which to build a Chapel, she consented to give a peice, but dying three days afterwards it fell through, she leaving the Field to her brothers, they at once consented to give a peice of land on which to erect a Chapel.”



Richard Page was engaged to superintend the erection of the Chapel. John Ison was appointed Treasurer.

The Chapel was extended in 1890 and was opened on the 9th November by Mr J Parker, and further renovated in the 1950s and again recently.

Previous church Presidents and Superintendents included John Wilton, Bernard Hutchinson and Kenneth Hutchison. For over 60 years Mrs Sarah Barkby was the church organist.



The highlight of the Church calendar was the Sunday School Anniversary which was held on the first Sunday in May, when the children and choir would sing songs and hymns that they had been practicing for many weeks. There would always be a treat for the children sometime after the event, in the early days there would be a tea, with sweets and games, in a local field. All the local chapels and churches had a Sunday School Anniversary or “Sermons” and would close their own church to support others in the area.

Today, the **CHAPEL IN THE VALLEY** is open and active with normally two services on Sunday and various activities for all age groups throughout the week. Click [here](#) for further information about the Chapel